

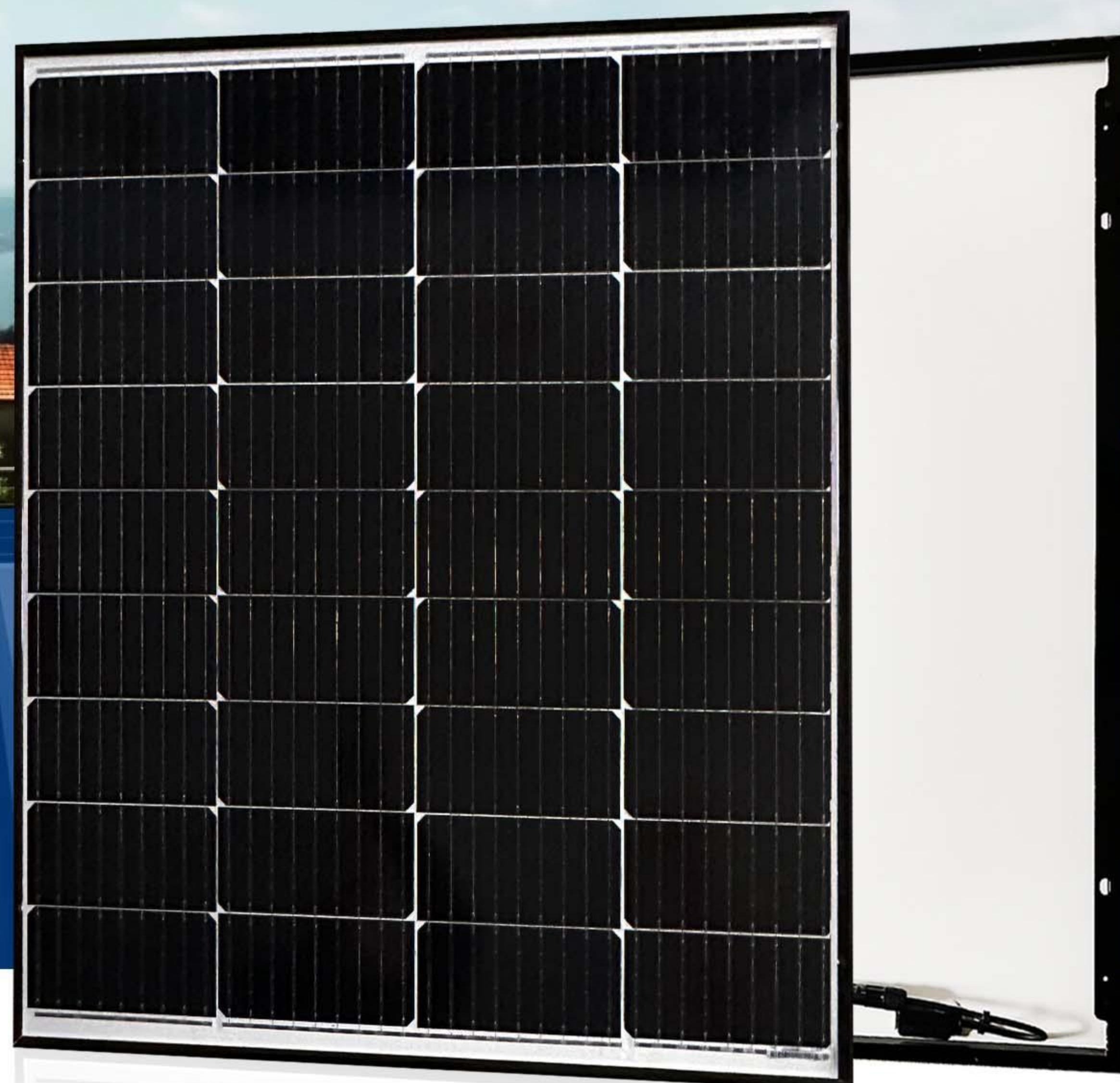
EagleRE

ERE P-PERC

Power Output

135–145Wp

Facial Single Glass Module
182mm Silicon wafer with Half-cut Tech
To Improve Efficiency and Quality



► KEY FEATURES

- Industry Leading Module Efficiency, up to 21.4%
- Higher power output even under low-light environments like on cloudy or foggy days
- 12 years materials warranty, 25 years power warranty
- Wide application scenerios such as BIPV, snow field, vertical installation, high humidity, strong wind and desert region
- PID Resistance Technology



High module conversion efficiency



Outstanding Performance in weak-light conditions



Lower operating temperature



Half-cell and MBB design



Extended wind and snow load tests



Withstanding harsh environment



Use Scenario customization

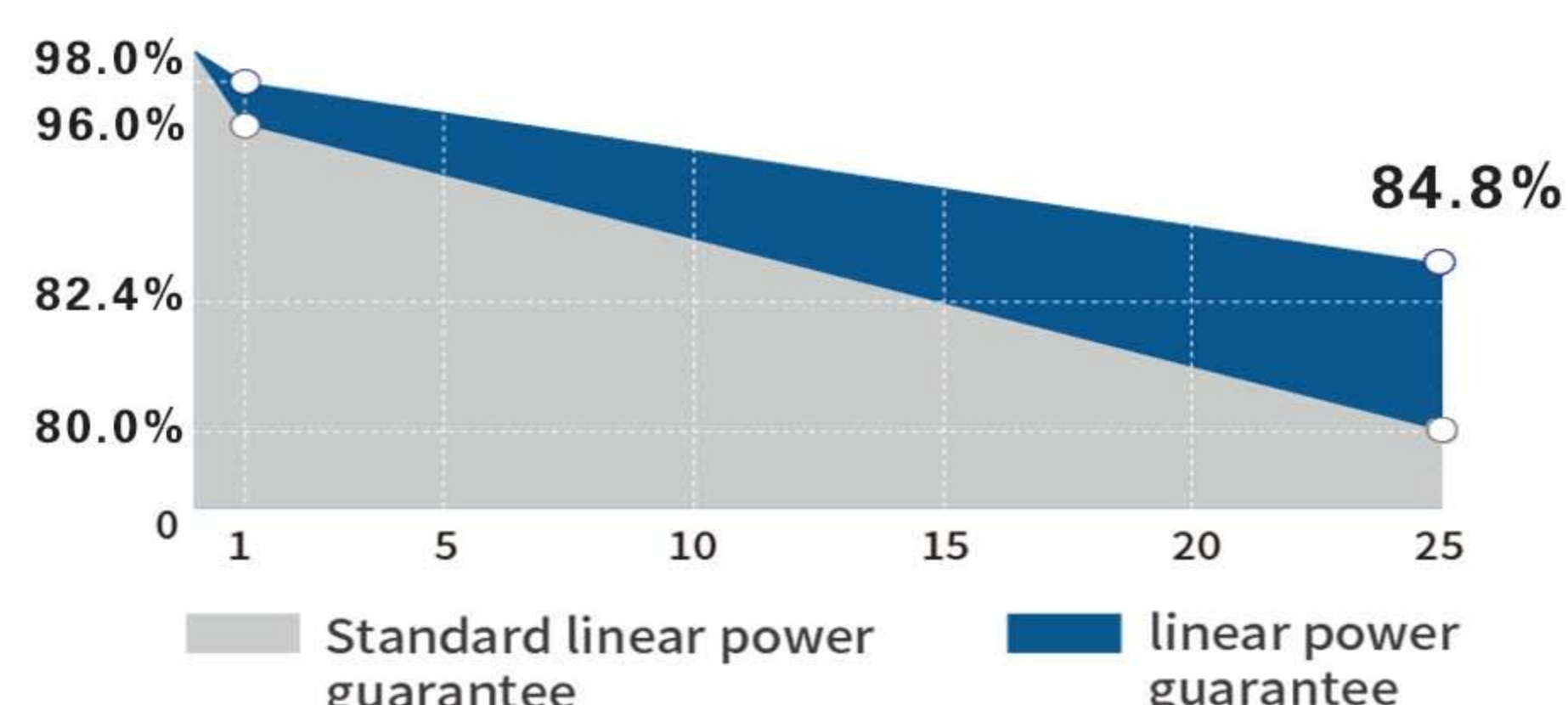
► QUALITY SYSTEM CERTIFICATES

ISO9001 | ISO14001 | IEC 61215 | IEC 61730
IEC 62716 | IEC 61701 | IEC TS 62804-1
IEC 60068-2-68

Specific information is referred to the product quality guarantee



► WARRANTY



Materials and workmanship warranty

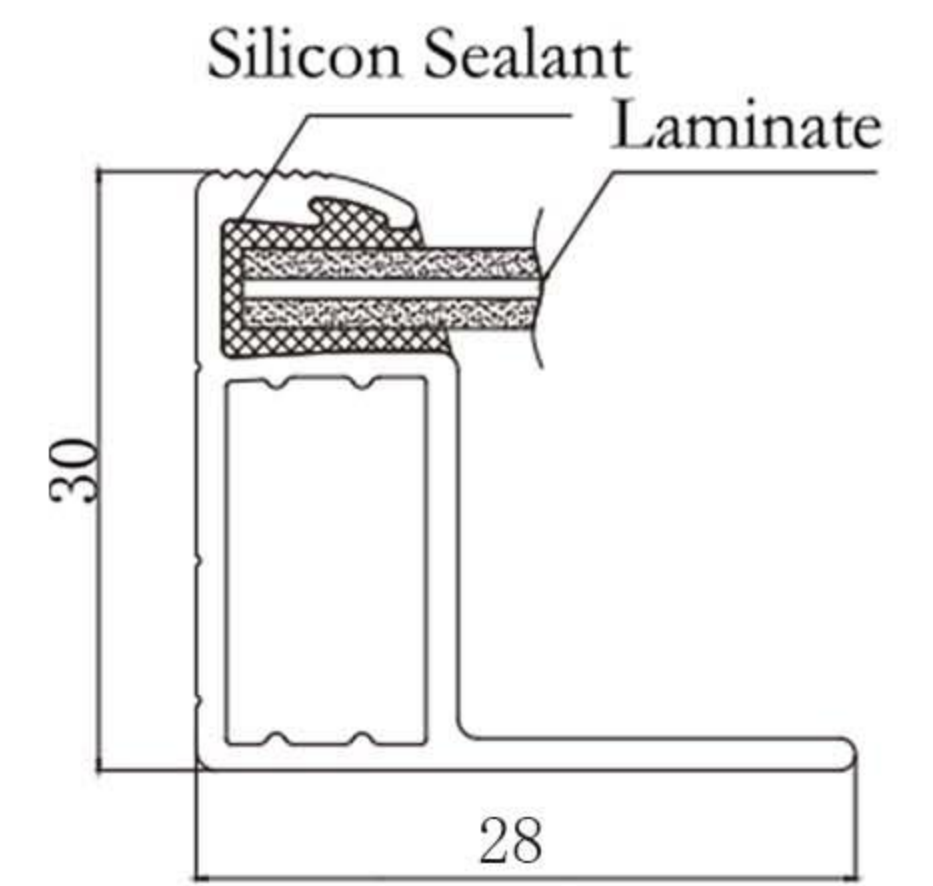
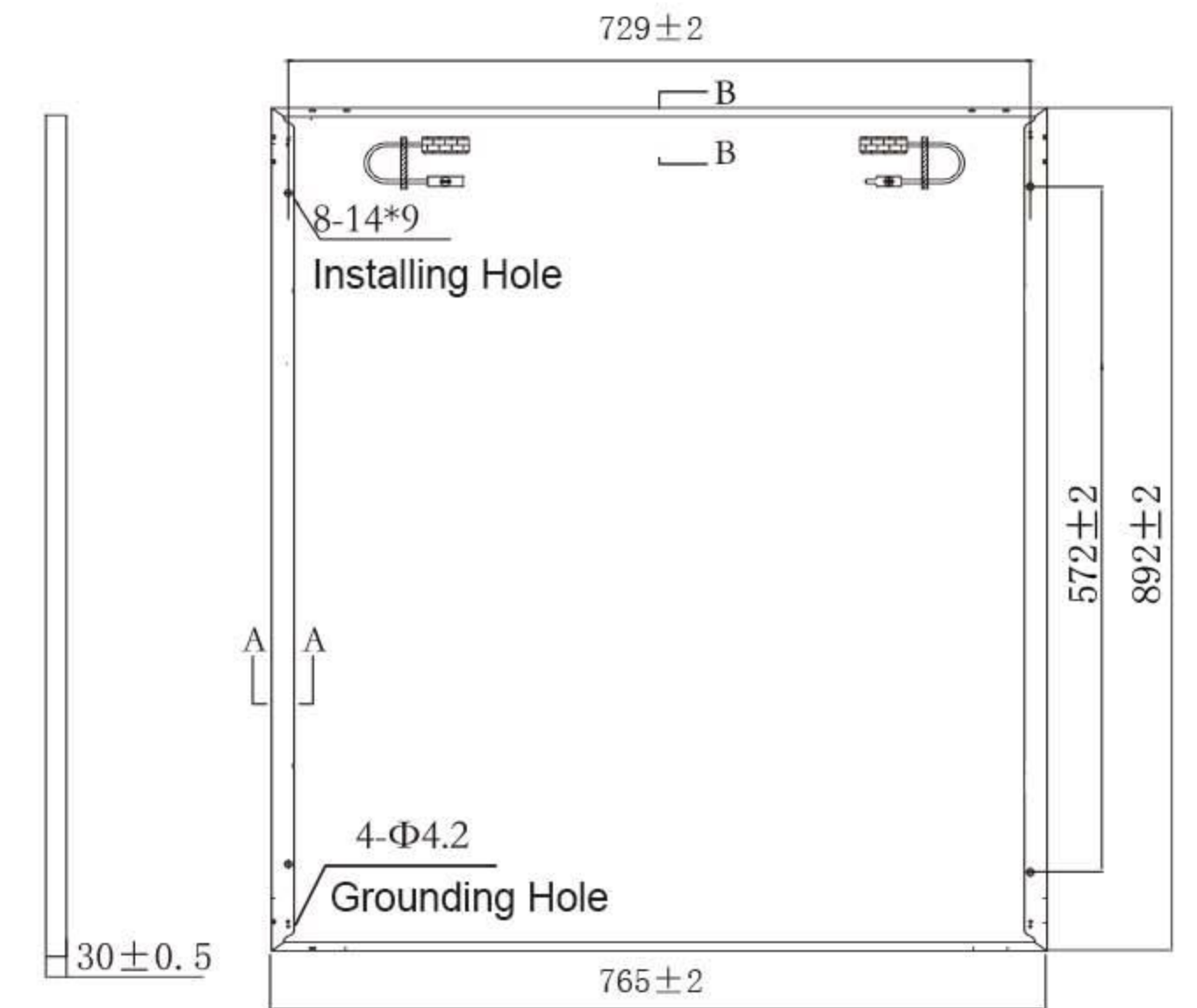


Linear power warranty

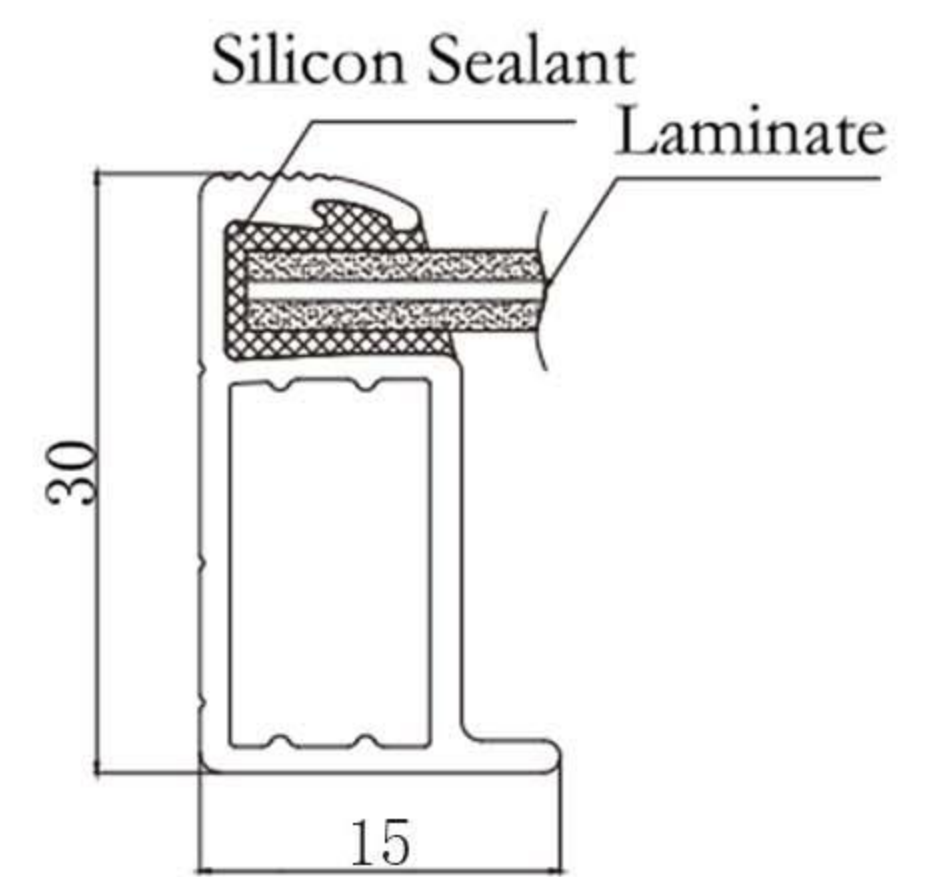
Electrical Properties (STC *)

Module Type	ERE-135-182P-18	ERE-140-182P-18	ERE-145-182P-18
Testing Condition	Front	Front	Front
Maximum Power P_{mp}	135W	140W	145W
Open Circuit Voltage- V_{oc}	24.75V	24.90V	25.05V
Short Circuit Current- I_{sc}	6.96A	7.16A	7.36A
Max Power Voltage- V_{mp}	20.83V	20.98V	21.13V
Max Power Current- I_{mp}	6.51A	6.71A	6.91A
Module Efficiency STC η_m	19.9%	20.6%	21.4%
Power Tolerance(W)	(0, +5W)		
Maximum System Voltage	1500V DC (IEC)		
Max Series Fuse Rating	25A		

*STC: Irradiance 1000W/m², module temperature 25, AM=1.5
Optional black frame or white frame module according to customer requirements



A Long Frame



B Short Frame

Electrical Properties (NMOT *)

Module Type	ERE-135-182P-18	ERE-140-182P-18	ERE-145-182P-18
Testing Condition	Front	Front	Front
Maximum Power P_{mp}	100.0W	104.0W	107.0W
Open Circuit Voltage- V_{oc}	23.46V	23.66V	23.80V
Short Circuit Current- I_{sc}	5.62A	5.80A	5.96A
Max Power Voltage- V_{mp}	19.74V	19.93V	20.07V
Max Power Current- I_{mp}	5.07A	5.23A	5.39A

*NMOT: Irradiance 800W/m², ambient temperature 20°C, AM=1.5, wind speed 1m/s

Temperature Characteristic

Pmax Temperature Coefficient	-0.350%/°C
Voc Temperature Coefficient	-0.280%/°C
Isc Temperature Coefficient	+0.048%/°C
Operating Temperature	-40°C ~ +85°C
Nominal Operating Cell Temperature	45±2°C

Mechanical Specifications

External Dimension	892*765*30mm
Weight	8kg
Solar Cell	P-PERC 182(P)
GLASS	3.2mm
Frame	Anodized aluminum alloy
Junction Box	IP68, 2diodes, MC4 / MC4 Compatible
Output Cables	2.5mm ² , 300mm Length (can be customized)
Mechanical Load	Front side 3600pa/Back side 1600pa
Packing Configuration	72pcs/box, 2016pcs/40HQ Container

IV Curve

