

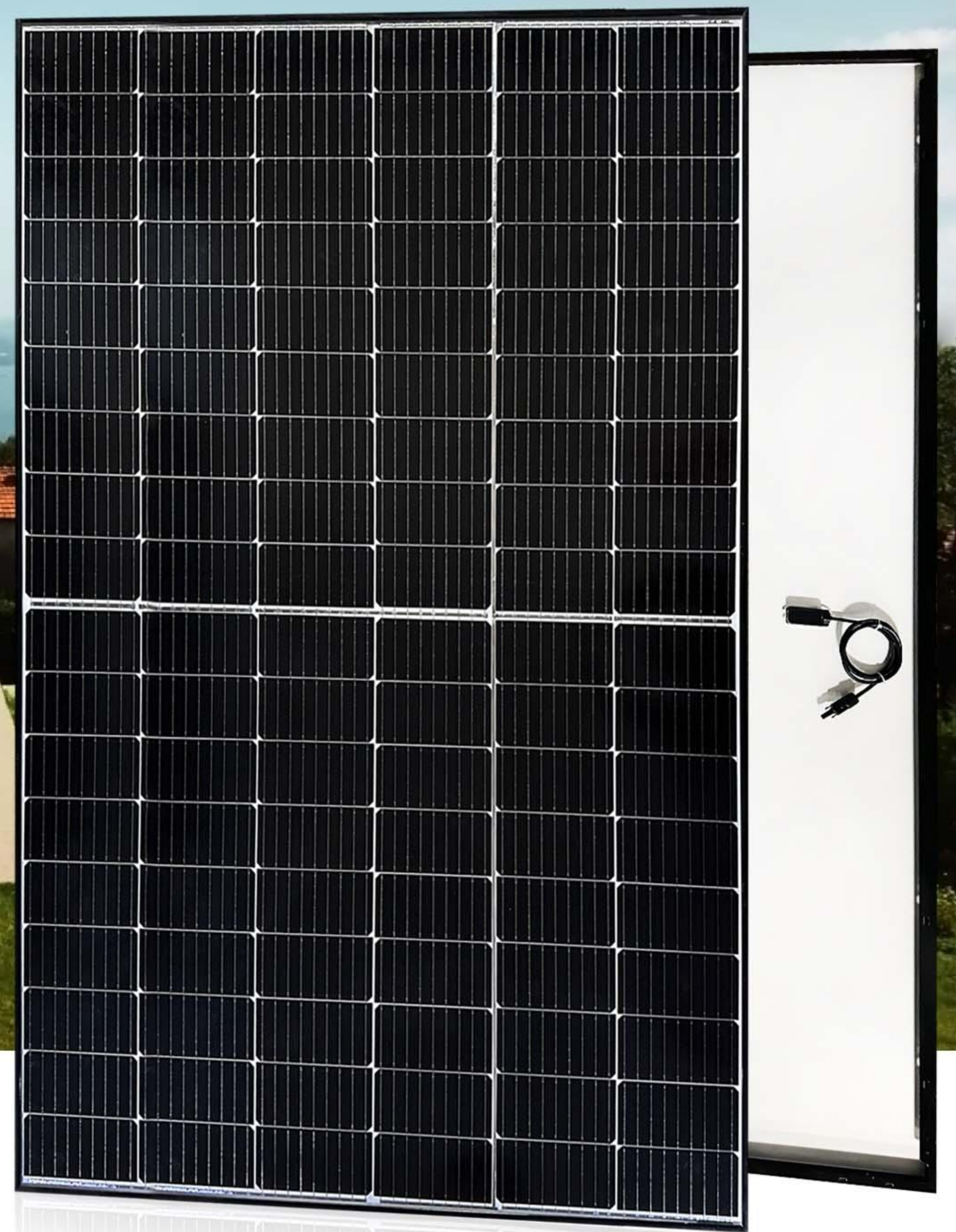
# EagleRE

## ERE P-PERC

Power Output

# 405-425Wp

Facial Single Glass Module  
182mm Silicon wafer with Half-cut Tech  
To Improve Efficiency and Quality



### ► KEY FEATURES

- Industry Leading Module Efficiency, up to 21.8%
- Higher power output even under low-light environments like on cloudy or foggy days
- 12 years materials warranty, 25 years power warranty
- Wide application scenerios such as BIPV, snow field, vertical installation, high humidity, strong wind and desert region
- PID Resistance Technology



High module conversion efficiency



Outstanding performance in weak-light conditions



Lower operating temperature



Half-cell and MBB design



Extended wind and snow load tests



Withstanding harsh environment



Use Scenario customization

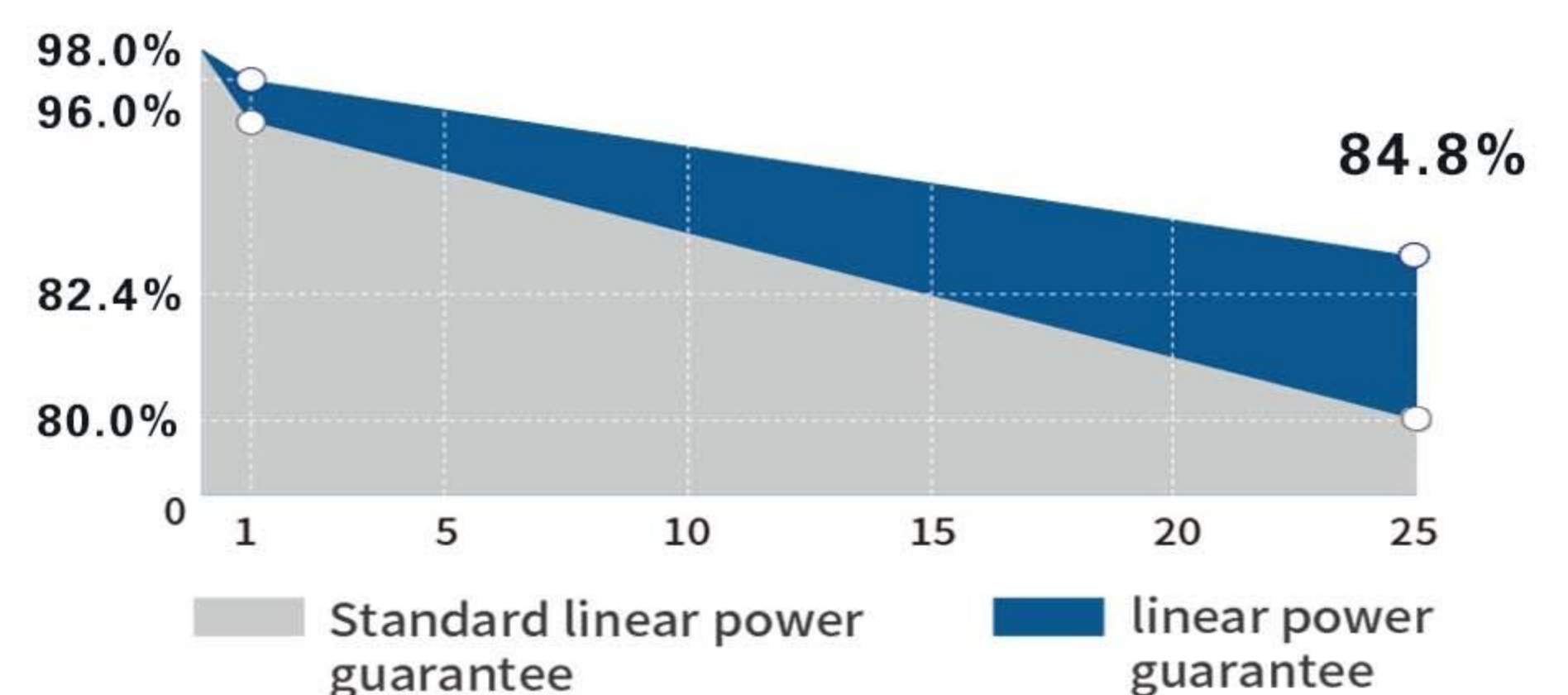
### ► QUALITY SYSTEM CERTIFICATES

ISO9001 | ISO14001 | IEC 61215 | IEC 61730  
IEC 62716 | IEC 61701 | IEC TS 62804-1  
IEC 60068-2-68

Specific information is referred to the product quality guarantee



### ► WARRANTY



12 YEAR Materials and workmanship warranty

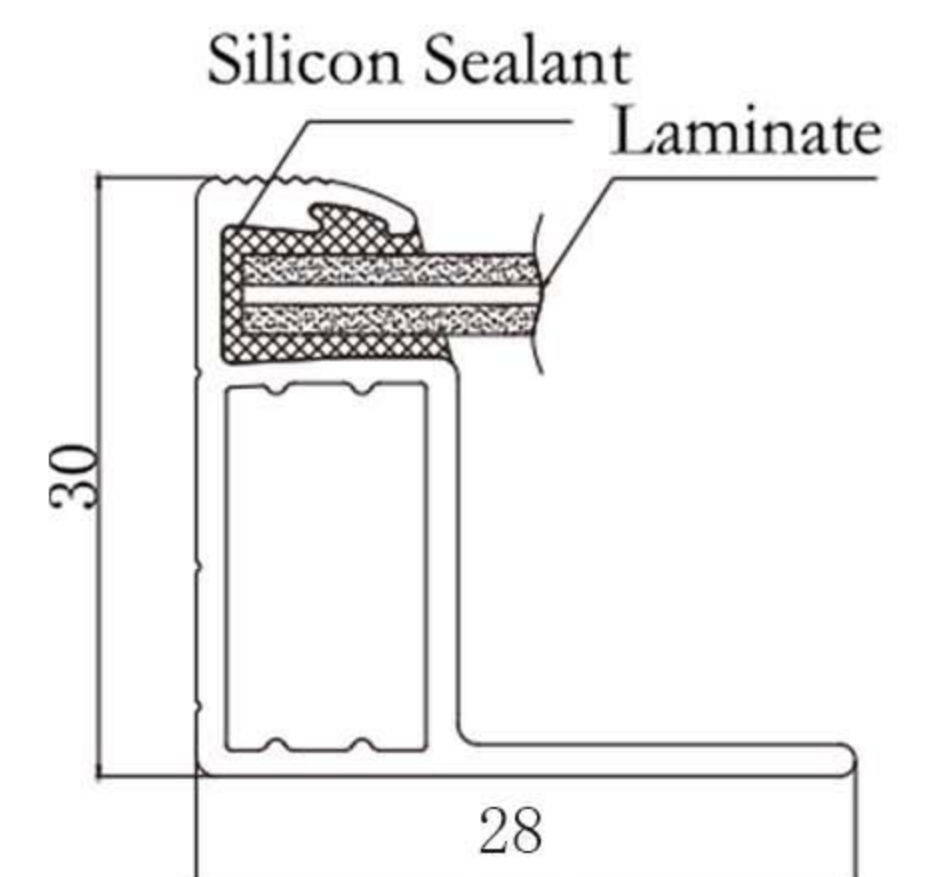
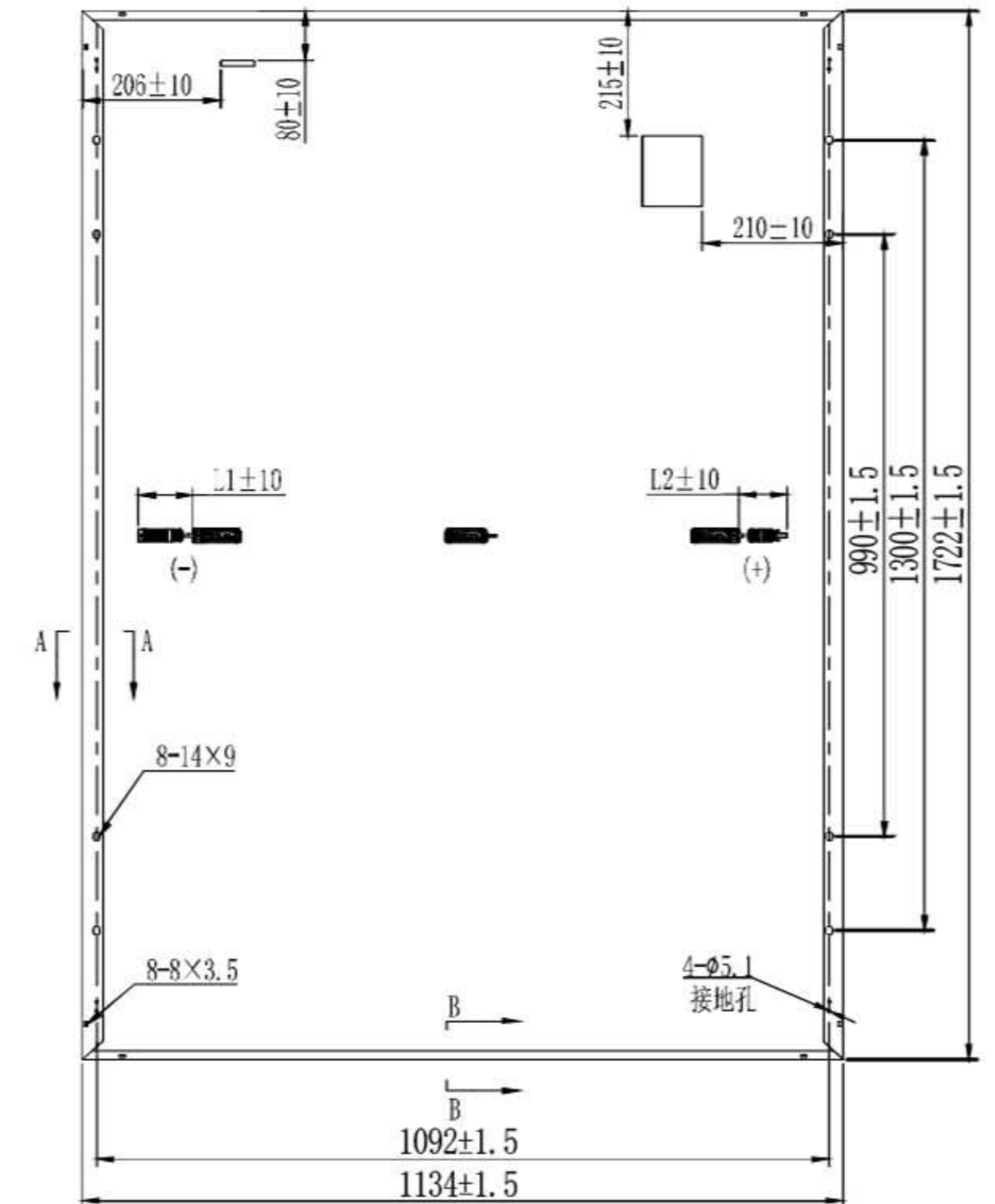


25 YEAR Linear power warranty

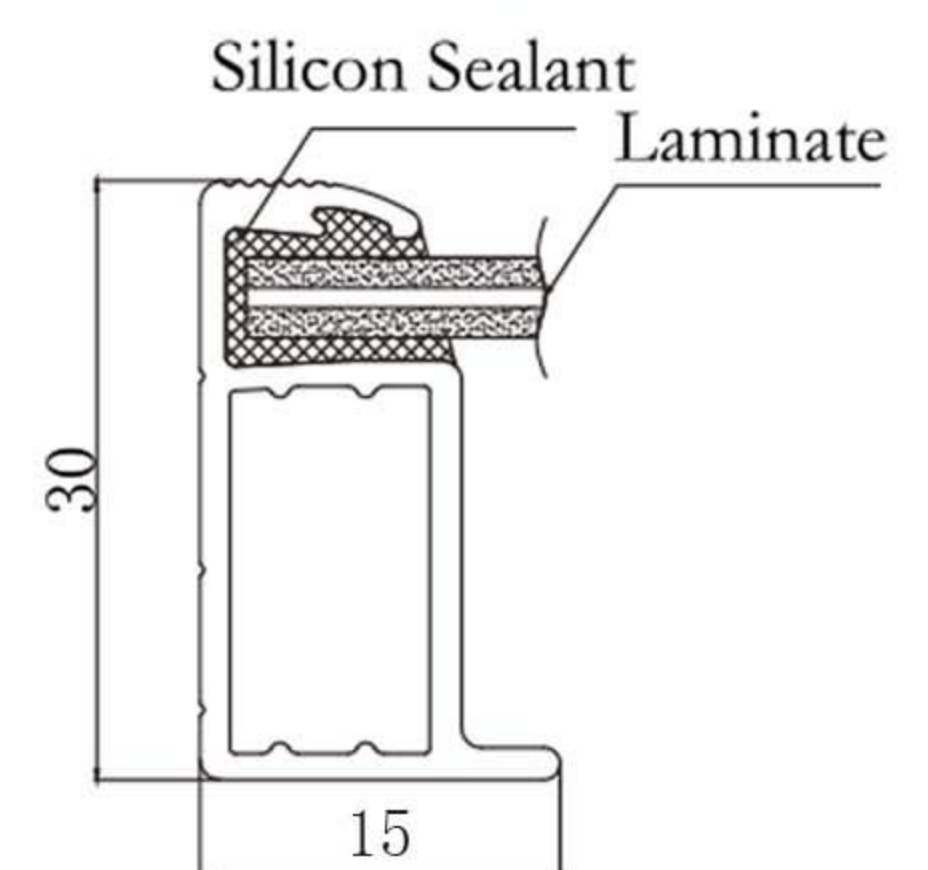
## Electrical Properties (STC \* )

Module Type	ERE-405-182P-54	ERE-410-182P-54	ERE-415-182P-54	ERE-420-182P-54	ERE-425-182P-54
Testing Condition	Front	Front	Front	Front	Front
Maximum Power $P_{mp}$	405W	410W	415W	420W	425W
Open Circuit Voltage- $V_{oc}$	37.19V	37.33V	37.48V	37.63V	37.79V
Short Circuit Current- $I_{sc}$	13.91A	13.98A	14.06A	14.14A	14.22A
Max Power Voltage- $V_{mp}$	31.31V	31.44V	31.60V	31.74V	31.91V
Max Power Current- $I_{mp}$	12.95A	13.05A	13.14A	13.24A	13.33A
Module Efficiency STC $\eta_m$	20.7%	21.0%	21.3%	21.5%	21.8%
Power Tolerance(W)	(0, +5W)				
Maximum System Voltage	1500V DC (IEC)				
Max Serise Fuse Rating	25A				

\*STC: Irradiance 1000W/m<sup>2</sup>, module temperature 25, AM=1.5  
Optional black frame or white frame module according to customer requirements



A Long Frame



B Short Frame

## Electrical Properties (NMOT \* )

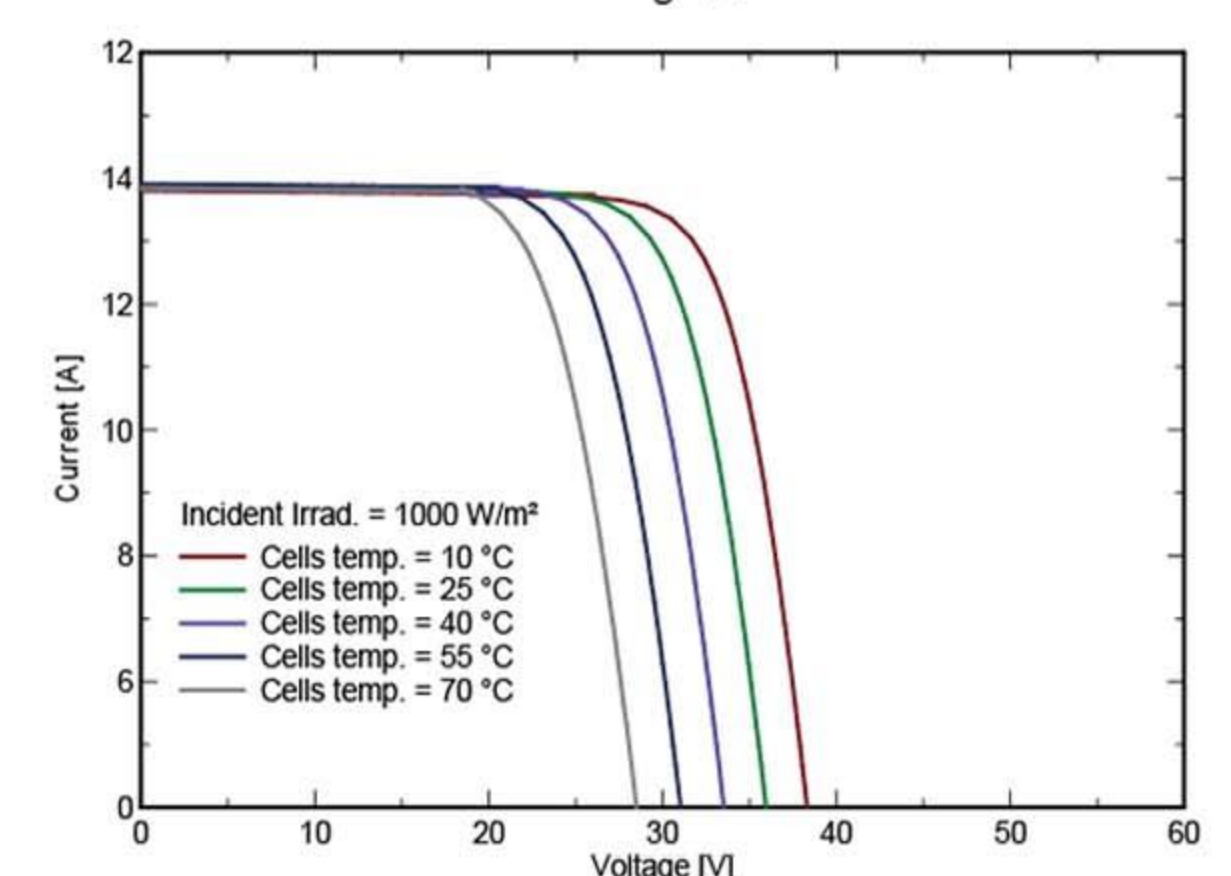
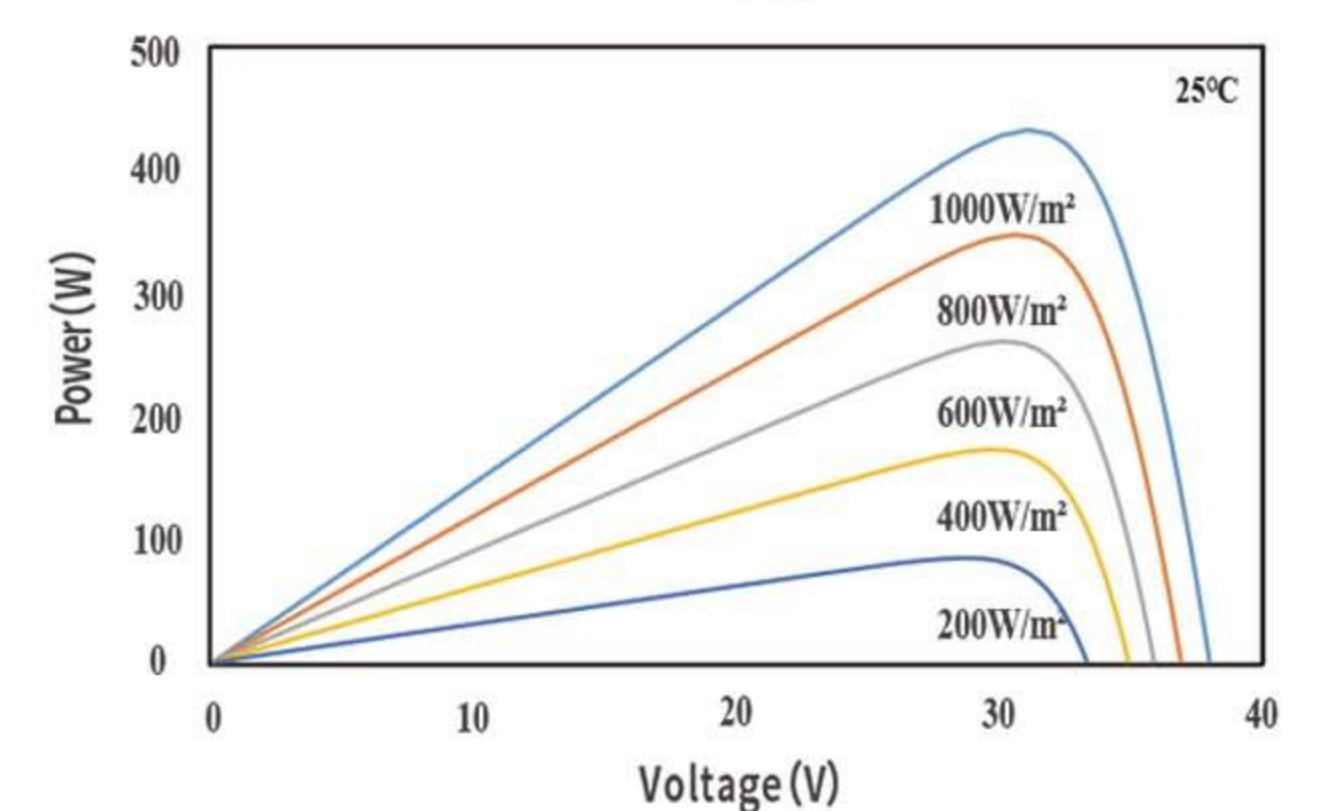
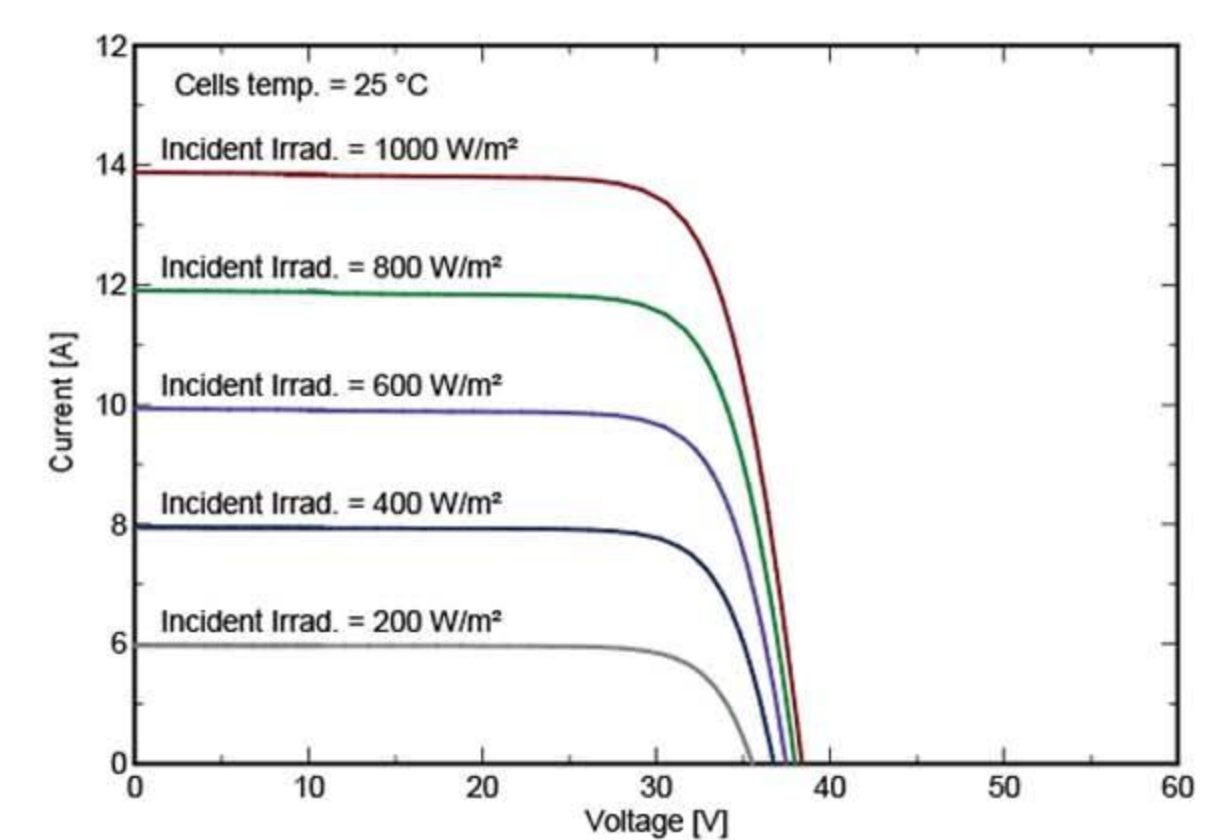
Module Type	ERE-405-182P-54	ERE-410-182P-54	ERE-415-182P-54	ERE-420-182P-54	ERE-425-182P-54
Testing Condition	Front	Front	Front	Front	Front
Maximum Power $P_{mp}$	301W	305W	309W	312W	316W
Open Circuit Voltage- $V_{oc}$	35.25V	35.38V	35.52V	35.67	35.82V
Short Circuit Current- $I_{sc}$	11.23A	11.28A	11.35A	11.41A	11.48A
Max Power Voltage- $V_{mp}$	29.68V	29.80V	29.95V	30.08V	30.24V
Max Power Current- $I_{mp}$	10.14A	10.23A	10.32A	10.37A	10.45A

\*NMOT: Irradiance 800W/m<sup>2</sup>, ambient temperature 20°C, AM=1.5, wind speed 1m/s

## Temperature Characteristic

Pmax Temperature Coefficient	-0.350%/°C
Voc Temperature Coefficient	-0.280%/°C
Isc Temperature Coefficient	+0.048%/°C
Operating Temperature	-40°C ~ +85°C
Nominal Operating Cell Temperature	45±2°C

### IV Curve



## Mechanical Specifications

External Dimension	1722x1134x30mm
Weight	21kg
Solar Cell	P-PERC 182(P)
GLASS	3.2mm
Frame	Anodized aluminum alloy
Junction Box	IP68, 2diodes, MC4 / MC4 Compatible
Output Cables	4.0mm <sup>2</sup> , 300mm Length (can be customized)
Mechanical Load	Front side 5400pa/Back side 2400pa
Packing Configuration	36pcs/box, 936pcs/40HQ Container